

Driver Licence Support Programme



**MINISTRY OF SOCIAL
DEVELOPMENT**

TE MANATŪ WHAKAHIATO ORA

Previous research has shown...

Providing support to obtain a driver licence makes an **extraordinary difference** to the wellbeing and economic outlook for disadvantaged peoples– and improves road safety.

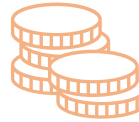
We have heard that **procurement needs to be appropriate and relevant** for community providers

There are extra challenges in some rural communities which create cycles of disadvantage.

Providers need certainty with longer-term contracts

We need to **scale up capacity** and fund what works well

We need to focus on create **high trust partnerships** between the Justice sector, MSD, local government and testers



What we heard from our communities ...

“Some nights it would be \$800 worth of fines just driving home from work”

“Nana doesn't understand that I shouldn't drive with just a learner's licence”

“I'm not worried about the police anymore now I have my licence”

“I got a better job because I got my licence”

“it makes it easier to get a bank account”

“I feel part of society now because I got my licence”



Budget 2022

There has been an investment of \$86M between MSD and Waka Kotahi over 4 years to improve access to licence support for up to 64,000 people targeting to those most disadvantaged in accessing a class 1 driver licence.

MSD is responsible for:

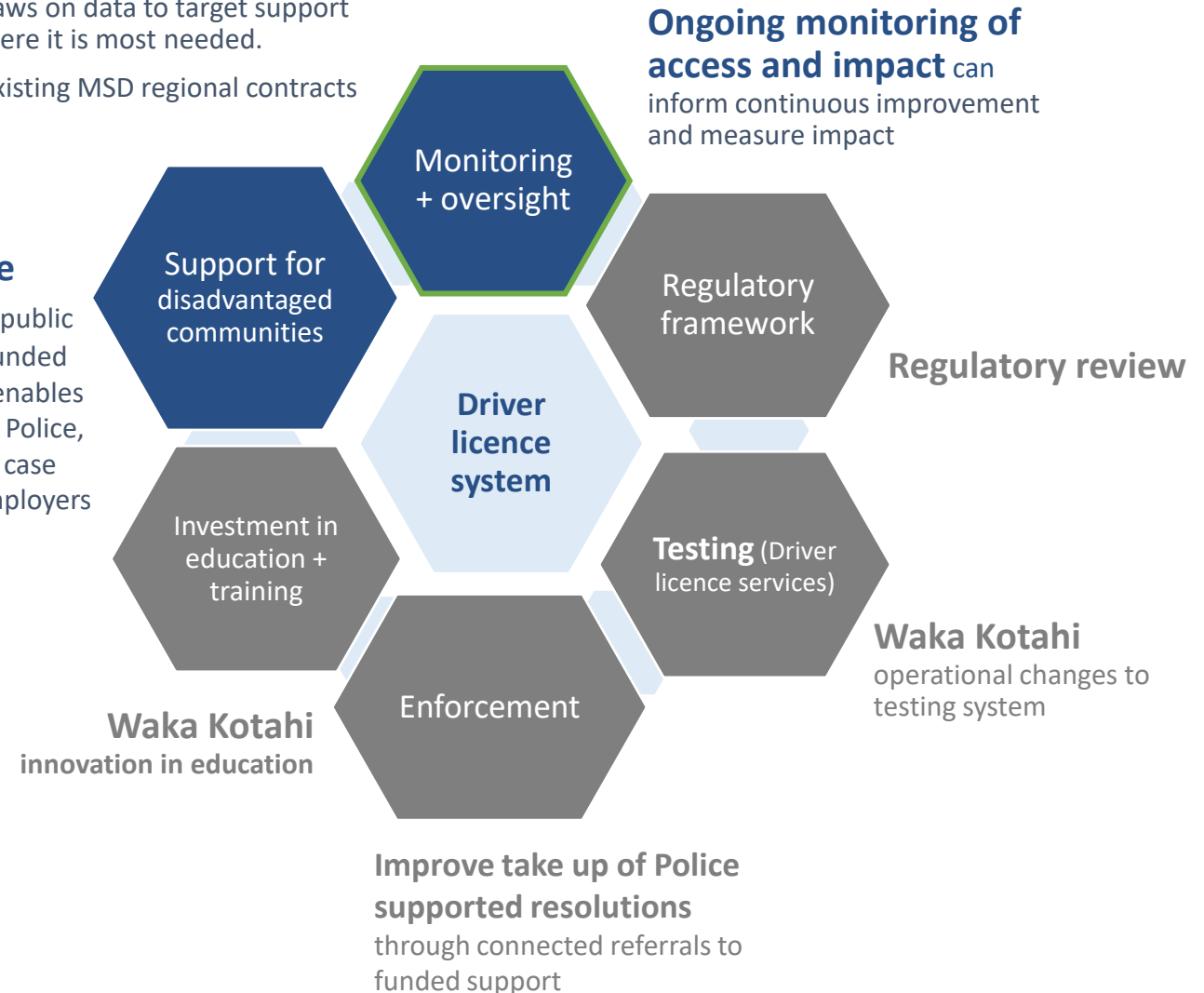
- designing a new contracting framework
- establishing an effective referral pathway
- improving reporting processes and the monitoring of participants
- maintaining an online public directory of driver license support providers.

Stabilise* and expand access to driver licence support including designing a new contracting framework. Draws on data to target support where it is most needed.

*existing MSD regional contracts

Coordinate

access to a public directory of funded support that enables referrals from Police, Schools, MSD case managers, employers etc.



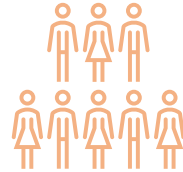
What comes next?

Sustain existing success - stabilise by rolling over existing successful MSD contracts while the sector builds capacity and capability.

Evolve - by consultation and engagement to design a new contracting framework.

Expand the initiative using a phased implementation approach - 10,000 placements this year, 15,000 next year and 20,000 in subsequent years.

Direct support to those most significantly impacted by barriers to gaining driver licences as identified through new data insights and local knowledge and relationships.



Consultation on contracting and procurement process

In conjunction with Waka Kotahi, consultation workshops are being scheduled and will run through to the end of November.

We will be engaging with Māori and Pacific Peoples to address the specific barriers facing those communities.

We will also be engaging with funded and non funded drivers licence support providers and other community groups with a vested interest.