

A path to low emissions transport

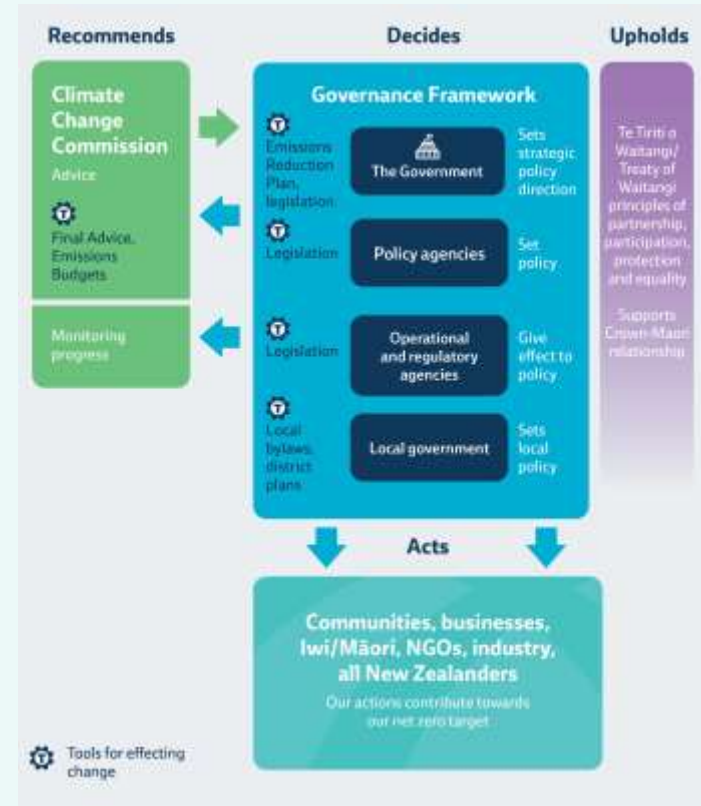
26 August 2022

Barry Anderson

General Manager (Sector Analysis)

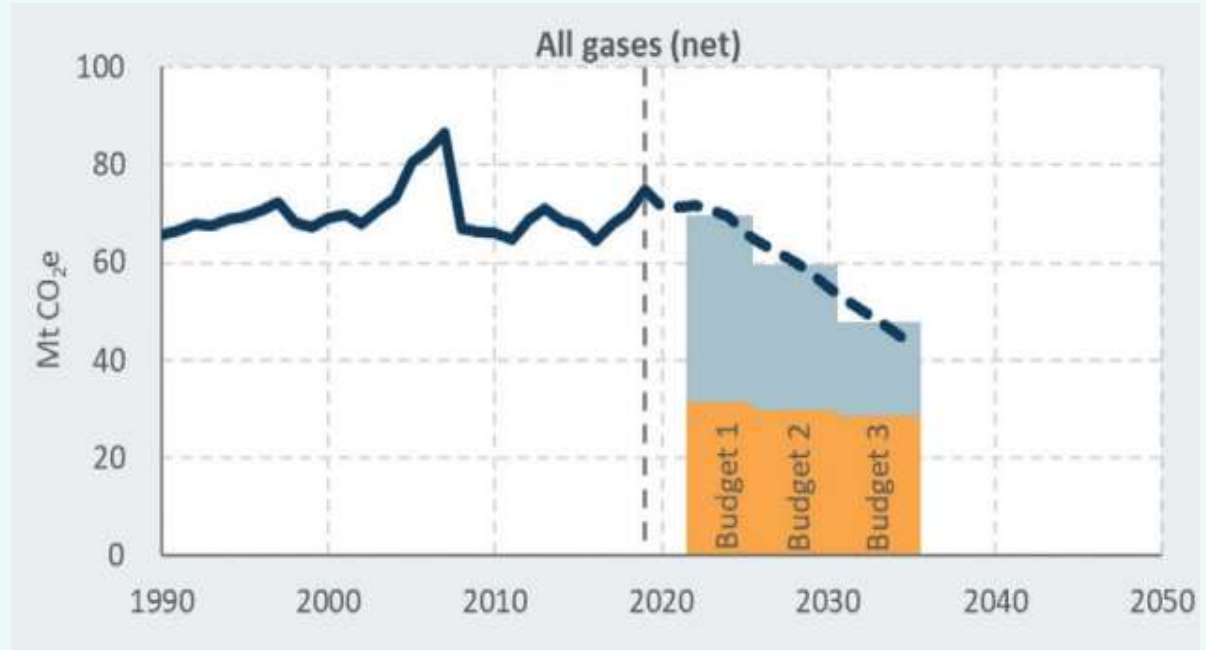
THE ROLE OF THE COMMISSION

- Independent, evidence-based, looking across the entire system.
- Advice on mitigation and adaptation.
- Monitoring progress and reporting publicly.



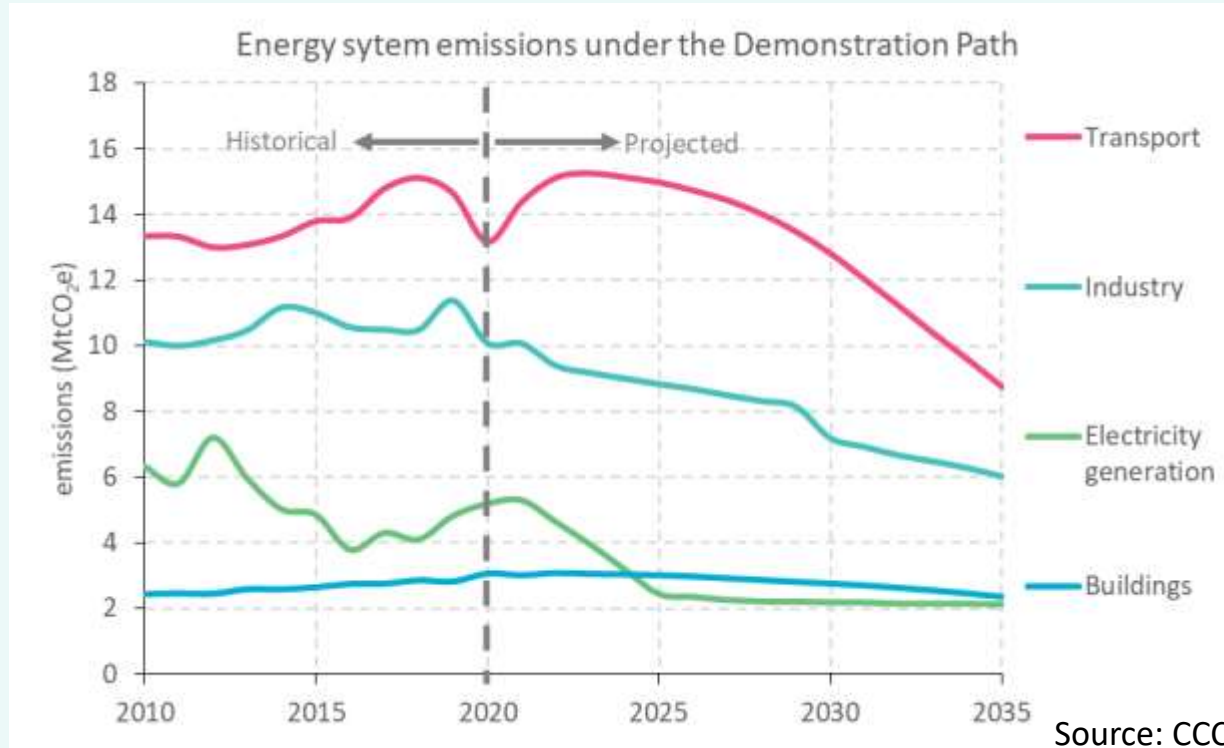
INĀIA TONU NEI – THE TIME IS NOW

- Wide-ranging recommendations
 - Emissions budgets
 - Policy direction
- Extensive engagement
- Sector analysis and modelling

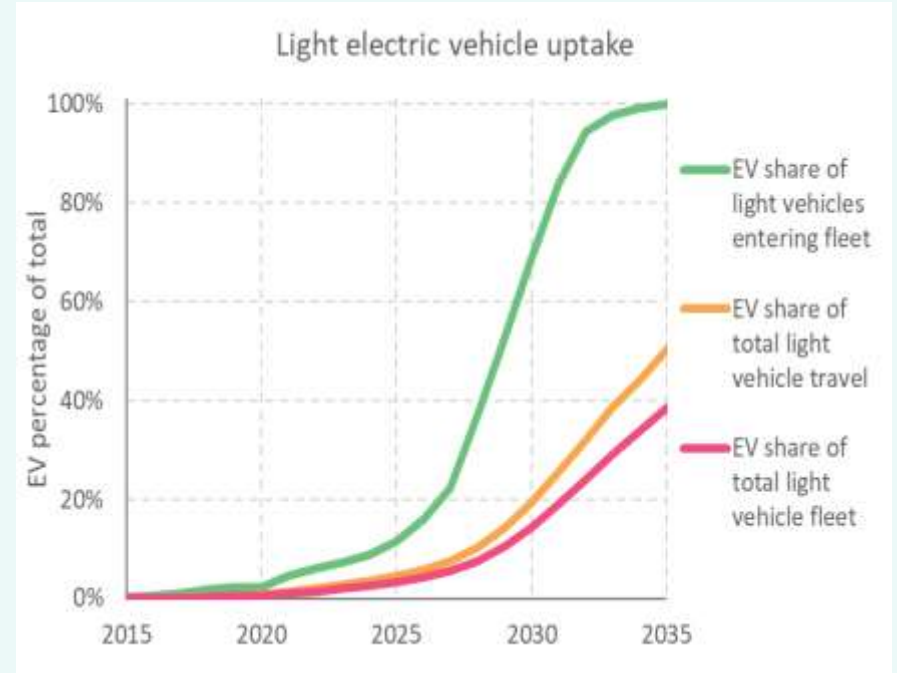
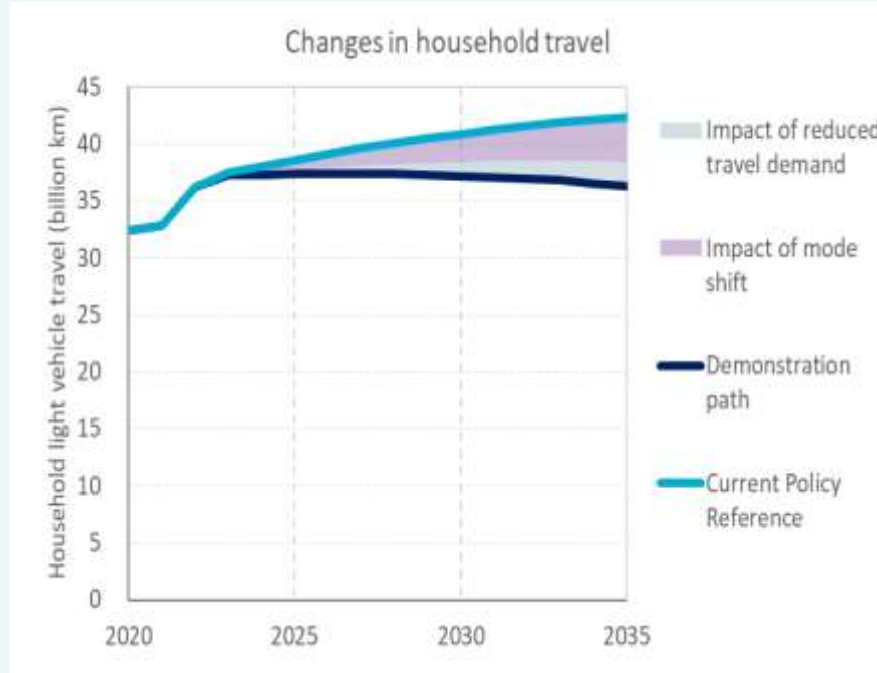


Source: CCC

OUR DEMONSTRATION PATH FOR TRANSPORT



HOW TRANSPORT CHANGES IN THE DEMONSTRATION PATH



Source: CCC

ROLE OF GOVT IN ACCELERATING CLIMATE ACTION



Emissions pricing



Removing barriers to change



Investing in unlocking innovation



Upholding Te Titiri o Waitangi



Supporting an equitable transition.

THE GOVERNMENT'S EMISSIONS REDUCTION PLAN

Over 80 actions
for the transport
sector

We need to move
from planning to
action

The Commission
will monitor on
progress

WHAT'S NEXT FOR THE COMMISSION

2022:

- Advice on agricultural emissions pricing
- Advice on ETS settings
- Publish time-frames for next 24 months
- Begin early engagement

2023:

- Advice on ETS Settings and second Emissions Reduction Plan
- Extensive engagement across all of our work program

2024:

- Monitor progress on: first Emissions Reduction Plan and first National Adaptation Plan
- Advice on: ETS settings, fourth emissions budget, review of the 2050 target, review of international aviation and shipping

WHAT IS THE ROLE OF DRIVER EDUCATION IN THE TRANSITION?

- What barriers is the industry facing?
- What are the opportunities for the industry?
- Your expertise will strengthen the Commission's advice.

Thank you



Want to get in touch?
hello@climatecommission.govt.nz

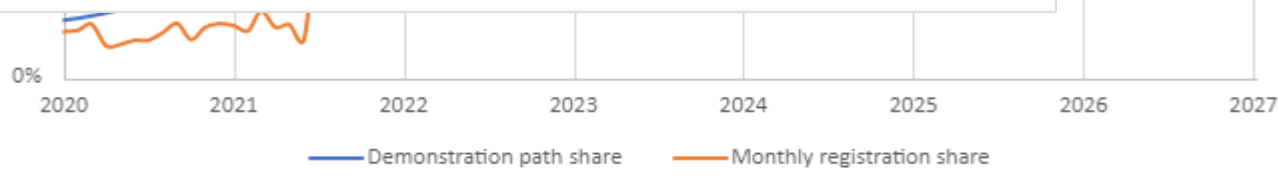
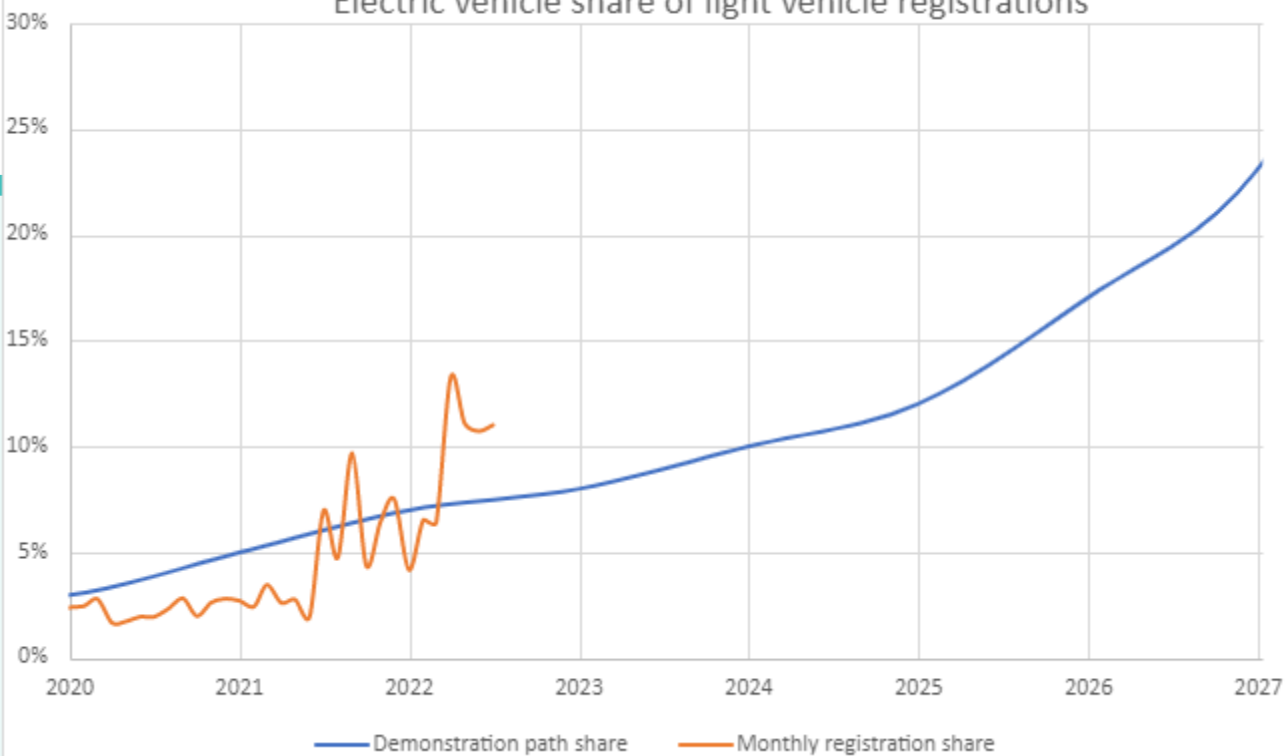


He Pou a Rangi
Climate Change Commission



Extra material

Electric vehicle share of light vehicle registrations



Source: CCC